



Key features

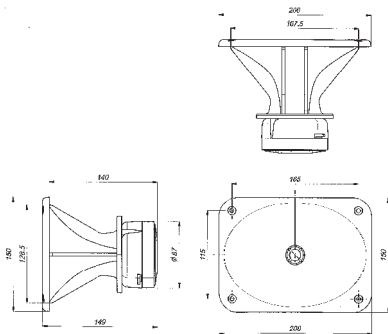
- 108dB SPL 1W / 1m average sensitivity
- 1 inch exit throat
- 1 inch voice coil diameter
- 50 Watt continuous program power above 2,5 kHz
- Usable in two way or multiway systems
- 90° x 60° Coverage
- Constant Directivity

GENERAL SPECIFICATIONS

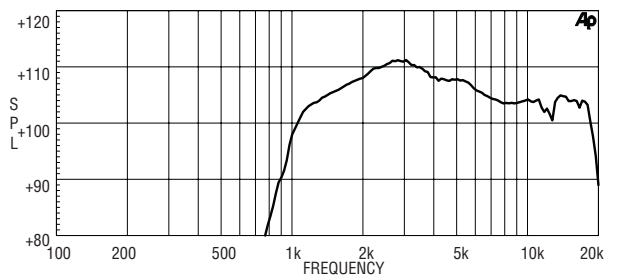
THROAT DIAMETER	25,4 mm	(1 in)
RATED IMPEDANCE	8 ohms	
D.C. RESISTANCE	5,7 ohms	
MINIMUM IMPEDANCE	6,6 ohms at 6500 Hz	
POWER HANDLING		
CONTINUOUS PINK NOISE	25 W above 2,5 kHz	(1)
CONTINUOUS PROGRAM	50 W above 2,5 kHz	(2)
SENSITIVITY (1W/1m)	108 dB	(3)
FREQUENCY RANGE	2 kHz - 18 kHz	
RECOMM. CROSS. FREQUENCY	3000 Hz	12dB/octave slope
NOMINAL COVERAGE		
HORIZONTAL	90°	
VERTICAL	60°	
DIAPHRAGM MATERIAL	High quality plastic film	
VOICE COIL DIAMETER	25,4 mm	(1 in)
VOICE COIL WINDING MATERIAL	Edgewound aluminum	
MAGNET MATERIAL	Ceramic	
FLUX DENSITY	1,65 T	
BL FACTOR	3,5 N/A	

MOUNTING INFORMATION

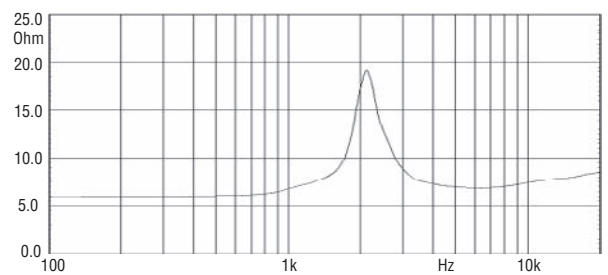
Overall dimension:		
Mouth Weight	150 mm	(5,9 in)
Mouth Width	200 mm	(7,9 in)
Lenght	150 mm	(5,9 in)
Mouth mounting dimensions:		
4 Ø 6 holes on the edge of rectangle with 165 mm x 115 mm sides		
Mounting dimensions:		
Rear Height	128 mm	(5 in)
Rear Width	170 mm	(6,7 in)
Net weight	1,3 Kg	(2,87 lb)
Shipping weight	1,6 Kg	(3,53 lb)
CardBoard packing	230 x 162 x 162 mm	
Dimensions	(9,06 x 6,38 x 6,38 in)	



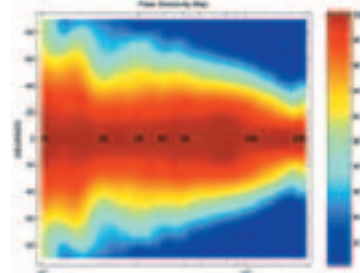
XD 120 MEASURED WITH 1W INPUT ON RATED IMPEDANCE AT 1M
DISTANCE ON AXIS FROM THE MOUTH OF HORN



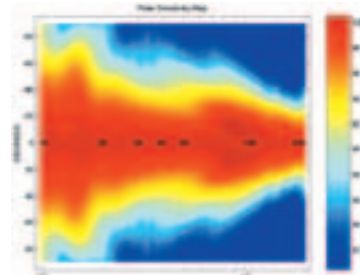
IMPEDANCE CURVE OF XD 120



HORIZONTAL POLAR DIRECTIVITY MAP



VERTICAL POLAR DIRECTIVITY MAP



(1) Continuous pink noise power rating is tested with a pink noise input having a 6 dB crest factor for two hours duration, per AES standard
(2) Continuous program power is defined as 3 dB greater than continuous pink noise and is a conservative expression of the transducer ability to handle music program material
(3) Sensitivity is measured on 1 W input on rated impedance at 1 m on axis from the mouth of XT 120 HORN averaged in the 3 kHz octave band